

Report Profiles

The MetroCount tube-based and piezo-based systems record the precise time each vehicle axle touches their sensors. From this data, the MTE[®] software can later extract information such as axle spacings, speed, headway for every vehicle.

This in-depth level of detail enables MTE to produce a variety of traffic reports. The software enables further flexibility in analysis through *Report Profiles*.

The power of MTE analysis: Profiles

Every report created in MTE is defined by its own *Local Profile* which encompasses its properties. These parameters include vehicle filtering, measurement units, classification

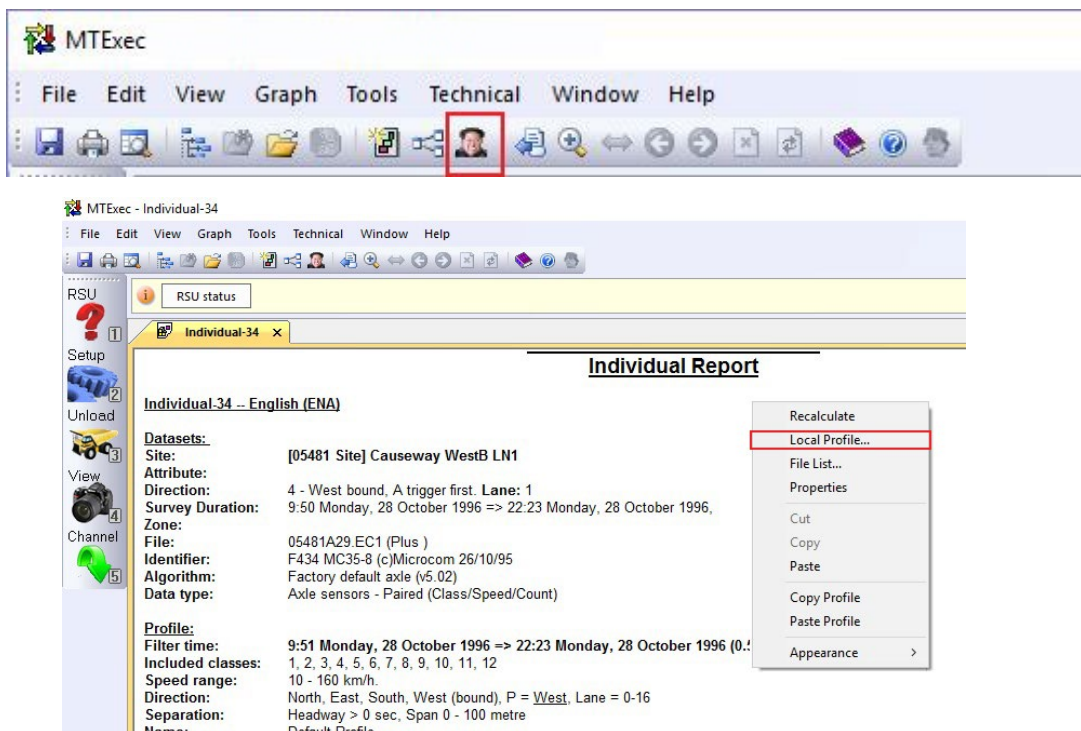
schemes, formatting options, data bins, mass tables, and various statistical settings. All these properties can be modified/filtered, resulting into a customised report. For example, data collected from a bi-directional roads can result into two different reports, based on direction of travelling. Likewise, MTE reports can be narrowed to specific issues, such as the speed of heavy vehicles on a multipurpose road.

Profiles are not exclusive to a dataset or to a set of properties. For example, you can generate the same report (e.g. Class/Speed matrix) using different classification schemes. Likewise, you can easily compare speeds at various times (e.g. before, during, and after school hours). The possibilities are endless.

Accessing Your Report's Profiles

To access the *Report Profile* window, click the 10th icon in the MTE toolbar. Alternatively, if you already compiled a report, right-click and choose *Local Profile*.

NOTE: Set your default Profile by selecting **Tools > Edit profile > Default profile** from the MTE toolbar.



Modifying Profile's parameters

The *Report Profile* window allows you to modify your dataset with ease and emphasise the traffic aspects you're most interested in.

The MTE reports enable you to change:

- **Speed:** define bins, min and max values;
- **Separation:** define a headway value (e.g. 4 sec for an accurate 85% speed in case of cogestion);
- **Span:** establish the limit lenght of vehicles
- **Direction:** select lanes to include in your analysis (choose between N, E, S, W or use all)
- **Class:** exclude any classes of vehicles
- **Scheme:** choose your classification scheme
- **Time:** define the time span of your research

Report profile

Report Profile settings
Vehicle filtering and report settings are here...

Name: Default Profile [Advanced...]

Speed: Include vehicles with speeds between 10km/h and 160km/h

Separation: No filter on Separation - (Headway)

Span: Include vehicles with span between 0.00 and 100.00m

Direction: North, East, South, West bound, Primary = West, Lanes = 0-16

Class: Include class 1-12

Scheme: Class: AustRoads 94

Time: From 9:51 Monday, 28 October 2011 to 22:23 Monday, 28 October 2011

Disable filter

<< Back Next >>

Advanced Profile settings

To access the Advanced Profile settings, click the *Advanced...* button in the upper right corner. This will give you access to additional options such as:

- **General:** set your profile name, establish your measurement units, time of week, value rounding
- **Format:** on-screen and printing display options
- **Header:** customise your report's look (add logo, report name, add/remove displayed info)
- **Colors:** customise the colours of graphs
- **Mass:** enter global vehicle mass values (kg)
- **Adjust:** modify the monthly/weekly adjustment factor based on historical, on-going data

Profile

General Format Header Colors Scheme Speed Mass Separation Adjust

Profile file path: Default Profile

Measurement units: Metric (World) Units - Length (metre, kilometre) Speed (m/s, km/h) Mass (kg, tonne)

Weekend: Saturday - Sunday

Arithmetic rounding: Test Round half up 3.500000 => Result Plus = 4, Minus = -3

Percentile 1 method: NIST Percentile 2 method: NIST

Save Menu button

OK Cancel

Copying a Profile to another report

- Edit the Profile of the source report, click the **Save Menu** button and select **Edit > Copy**.
- Exit this Profile by clicking **Cancel**.
- To edit the Profile of the destination report, click the **Save Menu** button and select **Edit > Paste**.
- Click the **OK** button to apply changes.

Saving a Local Profile

- While editing a Profile, click the **Save Menu** button and select **File > Save profile**.
- Type in a descriptive file name in the edit box.
- Click the **Save** button to continue your analysis.

Loading a Profile

- While editing a Profile, click the **Save Menu** button and select **File >> Load Profile**.
- Select the Profile you need and click **Open**.