

MTE[®] Site Lists

Road network management

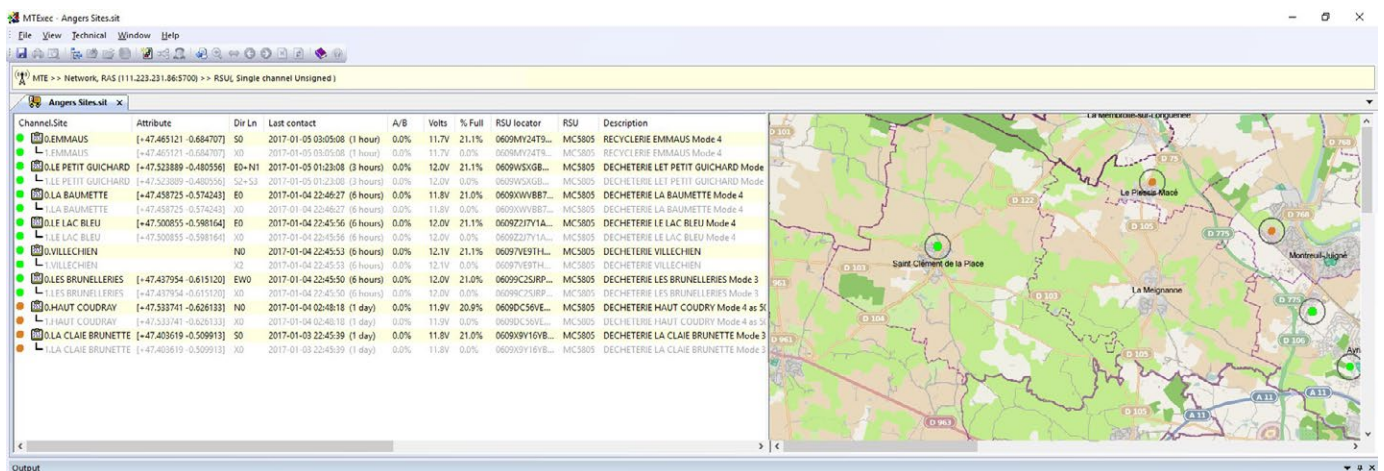
To make your life easier, it's best if you define your sites' attributes before you start your survey. In MTE, you can create your own *Site List* that among other details, includes the names, GPS coordinates and traffic direction. MetroCount sites that are also operating FieldPod, will give additional information on battery level and counter status (on/off).

Site Lists are recommended to:

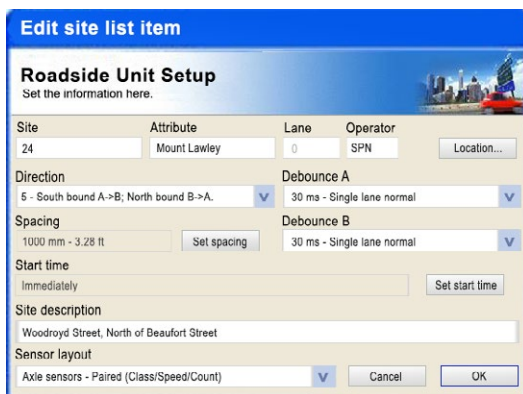
- users who repetitively survey the same site.
- field operators reporting to a survey manager.
- users who use MTE reports in other software.
- contractors who enable their clients to furnish pre-compiled, ready-to-run surveys.
- contractors who wish to provide their clients with consistent site details.

Creating Site Lists

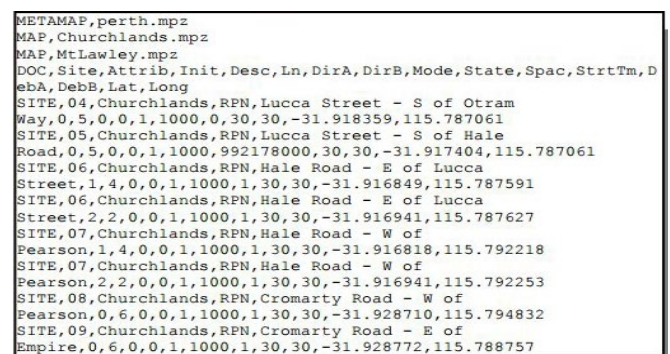
1. Open MTE and from the main toolbar, choose **File > Open Sites** (or **File > New Site List**).
2. Right-click to add/edit sites to your list.
3. Once the list is formed, right-click in the main window.
4. From the drop-down menu, choose to create a **New site or to Edit site**.
4. Fill in your site's details in the *Roadside Unit Setup* window. Click **OK**.
5. The previous step will automatically create a text file (.sit document) that can be used to transmit all site details to collaborators (i.e. contractors).



Example of Site List window in MTE. NOTE: The battery performance is displayed as these sites are connected to FieldPod[®].



Setup your site details.



Example of .sit document, compiling all your survey network details.